

8 PRIEDAS

Triukšmo sklaidos modeliavimo žemėlapiai

"1" alternatyva

DECIBEL - Main Result

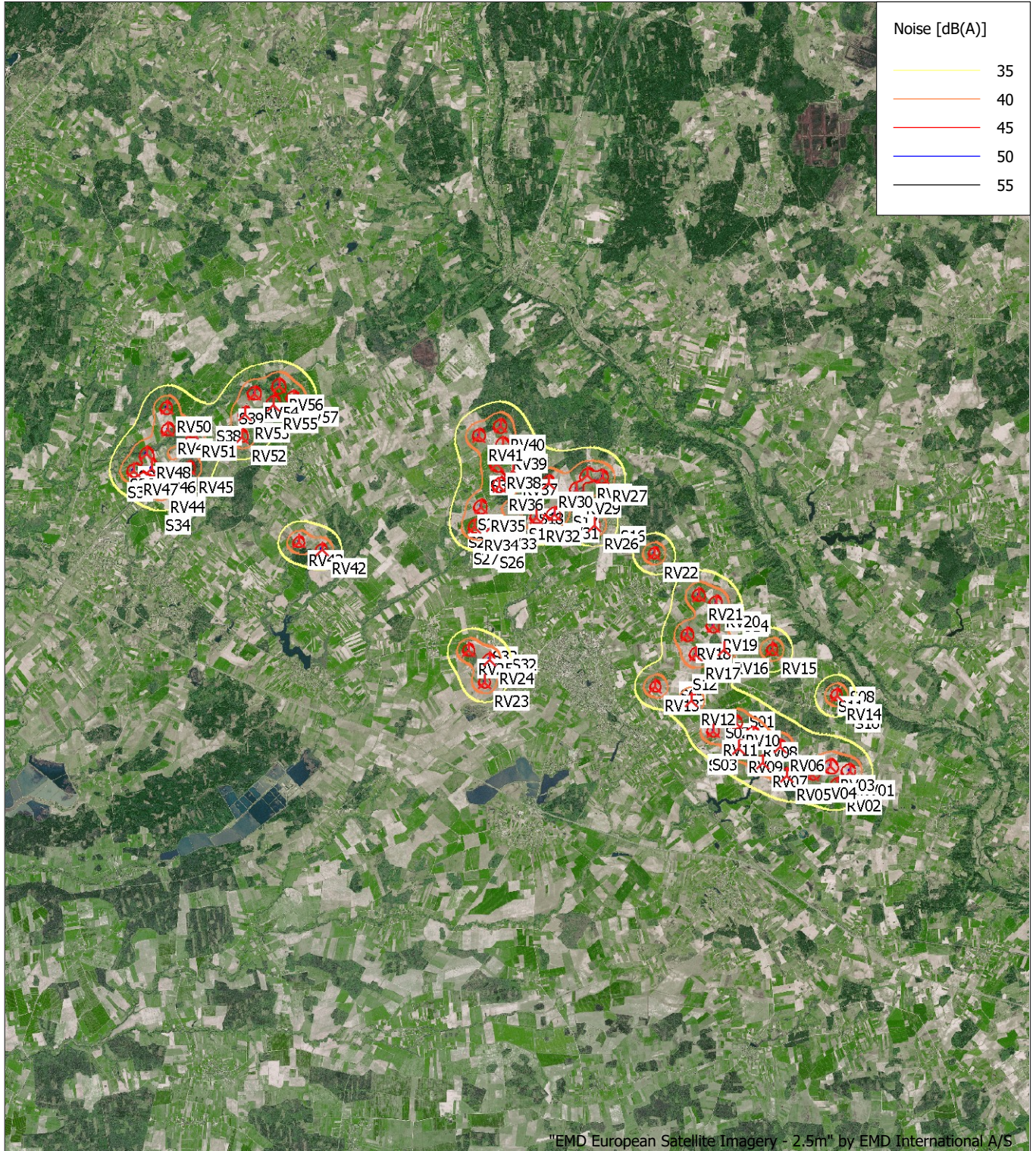
Calculation: Triuksmas

...continued from previous page

WTG	S23	S24	S25	S26	S27	S28	S29	S30	S31	S32	S33	S34	S35	S36	S37	S38	S39
RV23	4895	4891	4816	4835	5004	5609	5648	6197	7513	1414	1534	13044	14755	14823	14715	13418	13283
RV24	4125	4119	4044	4062	4275	4884	4919	5450	6750	688	790	12845	14534	14587	14458	13021	12836
RV25	3844	3849	3774	3802	3849	4445	4489	5067	6420	1209	657	12055	13743	13797	13670	12261	12096
RV26	3788	3725	3752	3696	4590	4730	4681	4436	4443	5306	5552	15354	16759	16706	16442	14060	13460
RV27	4609	4555	4606	4551	5311	5259	5197	4764	4249	6838	6993	15646	16937	16855	16559	13981	13286
RV28	4199	4148	4203	4149	4872	4790	4726	4273	3727	6646	6749	15132	16417	16335	16038	13459	12766
RV29	3612	3559	3611	3557	4311	4270	4209	3800	3425	6035	6127	14723	16045	15971	15684	13167	12506
RV30	2985	2942	3008	2958	3582	3444	3379	2901	2422	5933	5900	13764	15066	14988	14697	12165	11502
RV31	2532	2474	2518	2462	3284	3342	3289	2997	3042	4942	4992	13939	15326	15269	15001	12609	12014
RV32	1912	1856	1905	1850	2648	2706	2653	2390	2615	4638	4604	13314	14712	14659	14395	12039	11465
RV33	590	578	661	635	1109	1159	1114	1075	2077	4224	3939	11788	13218	13175	12924	10673	10163
RV34	692	737	791	814	592	546	509	762	2085	4288	3900	11170	12608	12568	12321	10108	9623
RV35	1252	1270	1348	1343	1297	948	878	400	1373	4936	4591	11352	12728	12672	12405	10060	9510
RV36	1995	1986	2069	2043	2253	1920	1849	1258	918	5595	5344	12030	13340	13267	12980	10499	9875
RV37	2636	2619	2700	2667	2960	2630	2560	1953	1117	6131	5935	12547	13810	13725	13426	10860	10189
RV38	2733	2730	2812	2790	2884	2454	2386	1734	551	6359	6094	12011	13248	13158	12855	10264	9585
RV39	3409	3403	3486	3461	3571	3128	3061	2405	1070	7006	6763	12327	13503	13399	13081	10403	9674
RV40	4073	4070	4153	4130	4180	3698	3635	2980	1576	7690	7435	12368	13472	13355	13023	10263	9488
RV41	3714	3724	3805	3793	3671	3134	3078	2447	1078	7395	7065	11550	12678	12566	12240	9521	8774
RV42	5802	5863	5854	5908	4978	4889	4942	5372	6266	7188	6437	5989	7598	7623	7464	6118	6123
RV43	6604	6665	6659	6712	5775	5649	5699	6090	6890	8024	7272	5142	6751	6778	6625	5412	5508
RV44	11595	11657	11663	11714	10768	10523	10562	10805	11227	13208	12454	650	1554	1593	1526	2945	3912
RV45	10751	10812	10825	10873	9933	9642	9677	9870	10198	12631	11883	1764	2483	2391	2118	1864	2762
RV46	12024	12085	12096	12144	11202	10926	10962	11168	11509	13780	13027	1319	1178	1084	869	2623	3630
RV47	12641	12703	12712	12761	11817	11550	11588	11803	12157	14326	13572	1464	525	470	494	3179	4188
RV48	12314	12375	12388	12436	11497	11199	11234	11413	11695	14171	13420	1846	1193	983	605	2461	3467
RV49	11846	11906	11925	11971	11046	10702	10730	10853	11020	13956	13215	2687	2293	2052	1635	1431	2409
RV50	12162	12221	12244	12288	11377	11002	11026	11106	11179	14421	13687	3440	2826	2555	2137	1442	2235
RV51	11010	11070	11091	11135	10215	9861	9888	10000	10157	13196	12459	2873	2956	2754	2361	721	1727
RV52	9339	9399	9423	9466	8558	8178	8202	8287	8414	11708	10987	3862	4511	4356	3998	1390	1332
RV53	9588	9645	9675	9715	8833	8413	8430	8455	8451	12141	11434	4470	4884	4693	4304	1322	702
RV54	9664	9720	9755	9792	8941	8485	8494	8459	8323	12399	11710	5220	5507	5296	4893	1843	860
RV55	8887	8943	8979	9015	8166	7708	7717	7682	7566	11649	10966	5419	5927	5740	5353	2356	1510
RV56	9105	9158	9199	9232	8417	7927	7932	7842	7601	12009	11343	6011	6393	6189	5789	2741	1766
RV57	8415	8468	8509	8542	7726	7237	7242	7157	6946	11329	10667	6122	6683	6498	6113	3113	2228

DECIBEL - Map 10,0 m/s

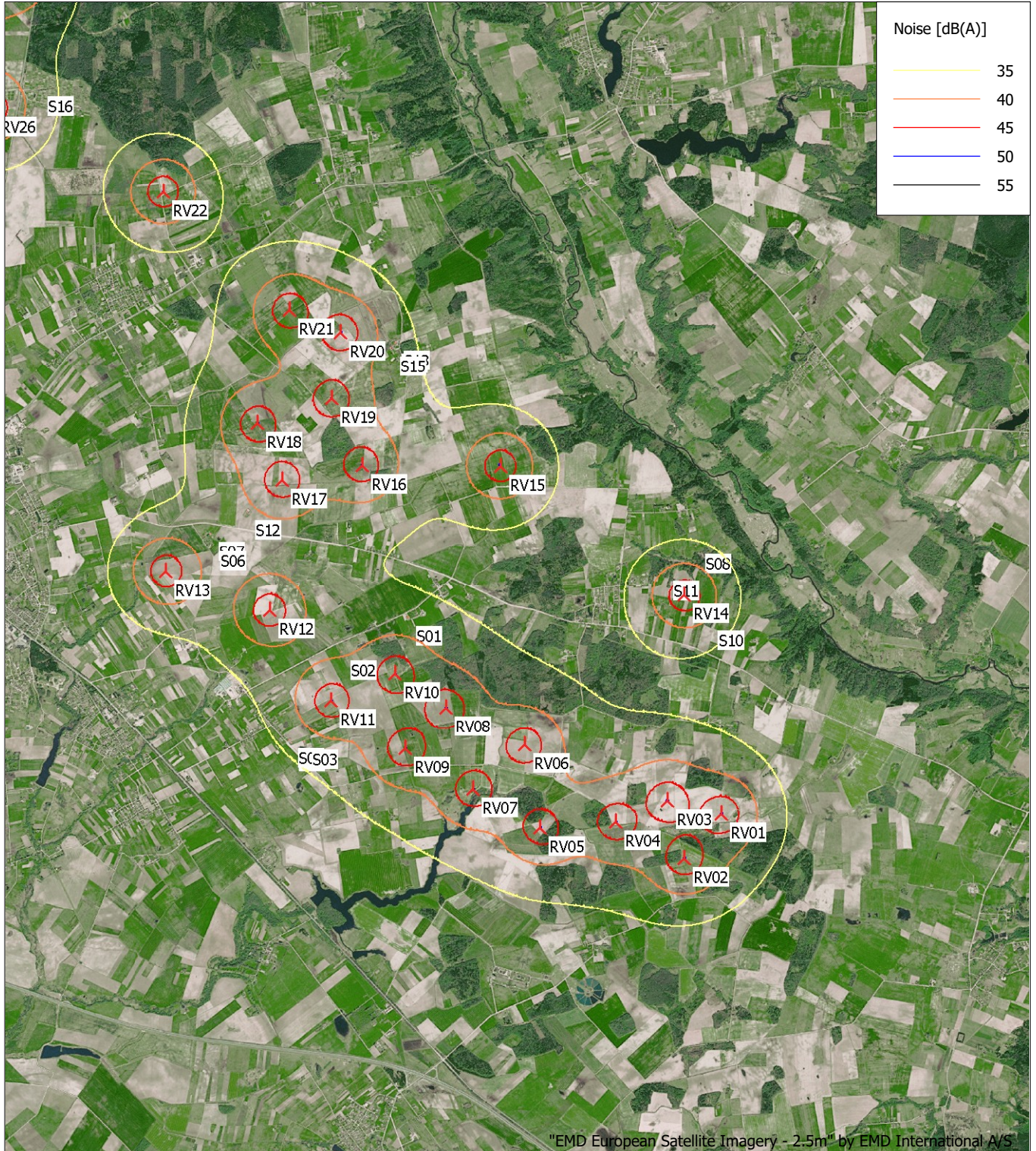
Calculation: Triukšmas



Map: windPRO European Satellite Imagery - 2.5m , Print scale 1:200 000, Map center Lithuanian TM LKS94-LKS94 (LT) East: 441 685 North: 6 141 462
 ▲ New WTG ■ Noise sensitive area
 Noise calculation model: ISO 9613-2 General. Wind speed: 10,0 m/s
 Height above sea level from active line object

DECIBEL - Map 10,0 m/s

Calculation: Triuksmas



"EMD European Satellite Imagery - 2.5m" by EMD International A/S

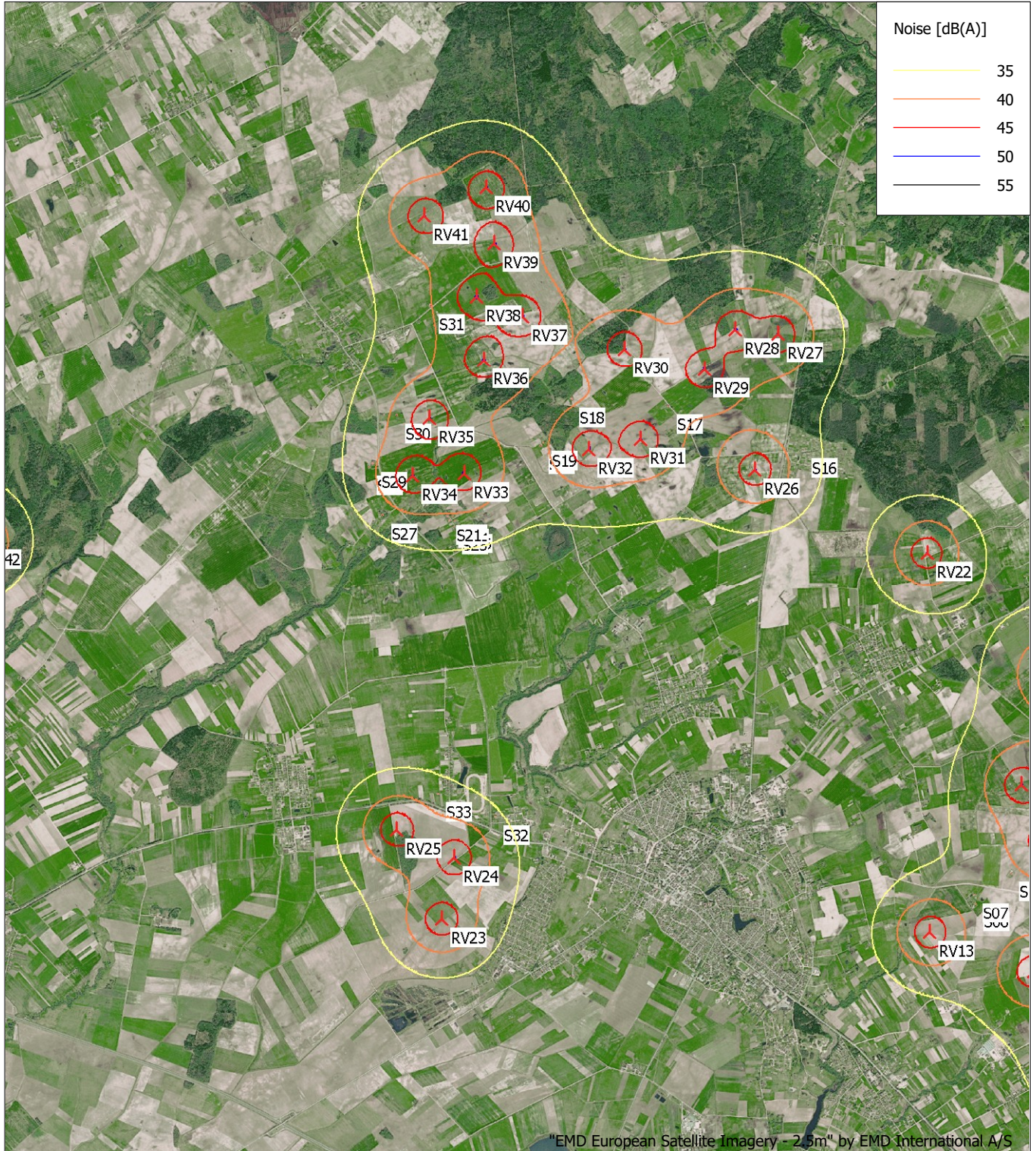


Map: windPRO European Satellite Imagery - 2.5m , Print scale 1:70 000, Map center Lithuanian TM LKS94-LKS94 (LT) East: 451 146 North: 6 137 782
 ▲ New WTG ■ Noise sensitive area

Noise calculation model: ISO 9613-2 General. Wind speed: 10,0 m/s
 Height above sea level from active line object

DECIBEL - Map 10,0 m/s

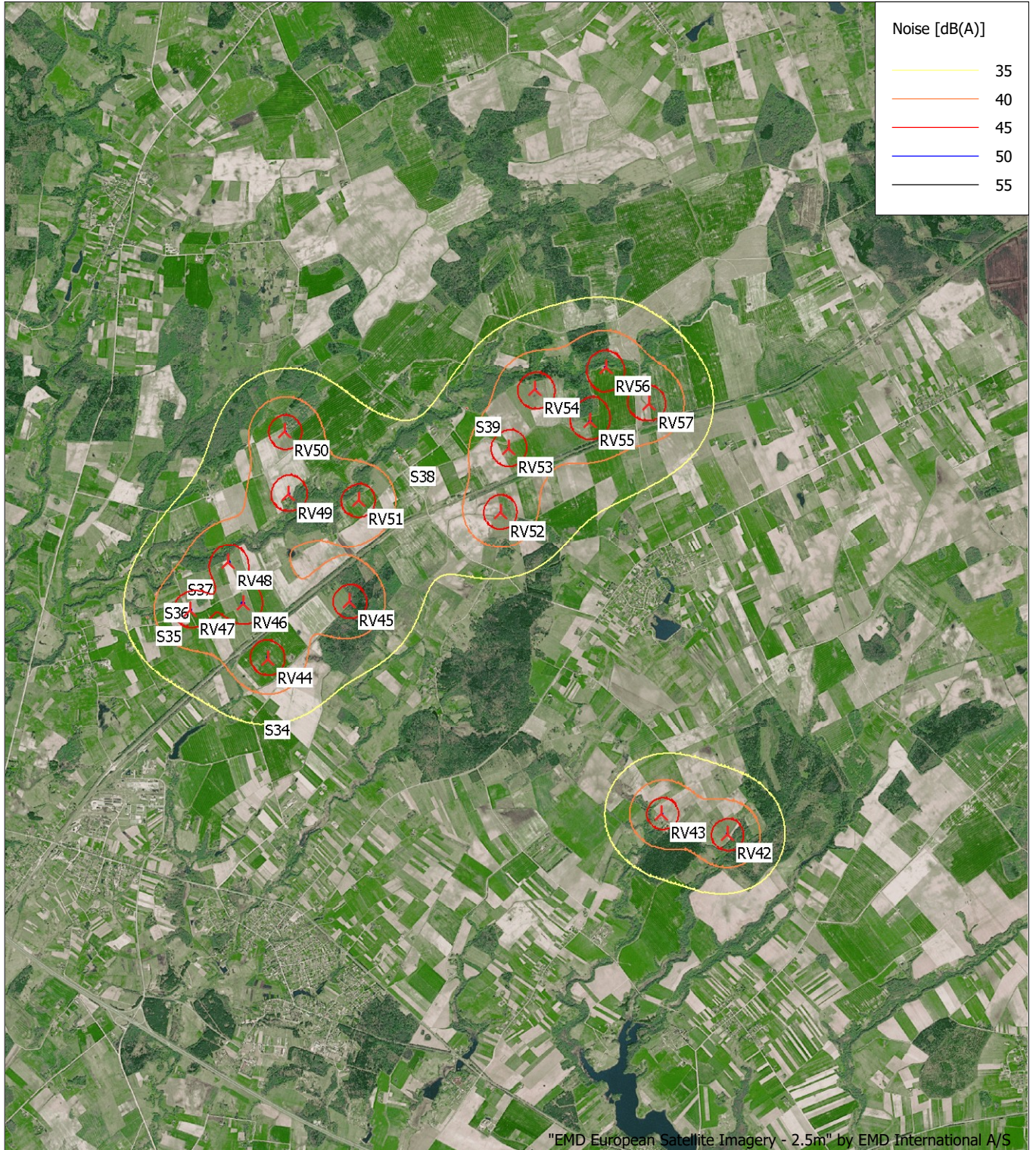
Calculation: Triuksmas



Map: windPRO European Satellite Imagery - 2.5m , Print scale 1:70 000, Map center Lithuanian TM LKS94-LKS94 (LT) East: 441 855 North: 6 142 329
 ▲ New WTG ■ Noise sensitive area
 Noise calculation model: ISO 9613-2 General. Wind speed: 10,0 m/s
 Height above sea level from active line object

DECIBEL - Map 10,0 m/s

Calculation: Triuksmas



Map: windPRO European Satellite Imagery - 2.5m , Print scale 1:70 000, Map center Lithuanian TM LKS94-LKS94 (LT) East: 432 696 North: 6 146 078
New WTG Noise sensitive area
Noise calculation model: ISO 9613-2 General. Wind speed: 10,0 m/s
Height above sea level from active line object

"2" alternatyva

DECIBEL - Main Result

Calculation: Triuksmas

...continued from previous page

Y	X	Z	Row data/Description	WTG type			Power, rated [kW]	Rotor diameter [m]	Hub height [m]	Noise data		Wind speed [m/s]	Status	LwA,ref [dB(A)]
				Valid	Manufact.	Type-generator				Creator	Name			
RV56	434 043	6 148 785	126,3 VESTAS V172-7.2 7200 172,0 ... Yes	VESTAS	V172-7.2-7 200	7 200	172,0	175,0	EMD	Level 0 - Measured - PO7200	10,0	From other hub height	106,9 h	
RV57	434 569	6 148 337	126,9 VESTAS V172-7.2 7200 172,0 ... Yes	VESTAS	V172-7.2-7 200	7 200	172,0	175,0	EMD	Level 0 - Measured - PO7200	10,0	From other hub height	106,9 h	

h) Generic octave distribution used

Calculation Results

Sound level

Noise sensitive area

No.	Name	Y	X	Z	Immission height [m]	Noise [dB(A)]	From WTGs [dB(A)]	Demands fulfilled ?
S01	Noise sensitive area: Demands defined in calculation setup. (1)	450 038	6 137 483	108,1	1,5	45,0	38,3	Yes
S02	Noise sensitive area: Demands defined in calculation setup. (2)	449 224	6 137 072	103,4	1,5	45,0	40,5	Yes
S03	Noise sensitive area: Demands defined in calculation setup. (3)	448 754	6 135 990	102,8	1,5	45,0	38,6	Yes
S04	Noise sensitive area: Demands defined in calculation setup. (4)	448 591	6 135 969	109,3	1,5	45,0	37,2	Yes
S05	Noise sensitive area: Demands defined in calculation setup. (5)	448 575	6 136 012	109,9	1,5	45,0	37,4	Yes
S06	Noise sensitive area: Demands defined in calculation setup. (6)	447 639	6 138 440	106,7	1,5	45,0	38,5	Yes
S07	Noise sensitive area: Demands defined in calculation setup. (7)	447 631	6 138 546	104,5	1,5	45,0	38,1	Yes
S08	Noise sensitive area: Demands defined in calculation setup. (8)	453 584	6 138 324	98,4	1,5	45,0	36,9	Yes
S09	Noise sensitive area: Demands defined in calculation setup. (9)	453 739	6 137 403	111,5	1,5	45,0	40,1	Yes
S10	Noise sensitive area: Demands defined in calculation setup. (10)	453 747	6 137 398	111,5	1,5	45,0	39,9	Yes
S11	Noise sensitive area: Demands defined in calculation setup. (11)	453 207	6 138 003	105,0	1,5	45,0	41,5	Yes
S12	Noise sensitive area: Demands defined in calculation setup. (12)	448 099	6 138 813	103,6	1,5	45,0	39,8	Yes
S13	Noise sensitive area: Demands defined in calculation setup. (13)	449 923	6 140 875	108,3	1,5	45,0	38,3	Yes
S14	Noise sensitive area: Demands defined in calculation setup. (14)	449 897	6 140 837	109,5	1,5	45,0	38,6	Yes
S15	Noise sensitive area: Demands defined in calculation setup. (15)	449 873	6 140 804	110,6	1,5	45,0	38,8	Yes
S16	Noise sensitive area: Demands defined in calculation setup. (16)	445 600	6 144 031	113,3	1,5	45,0	38,0	Yes
S17	Noise sensitive area: Demands defined in calculation setup. (17)	443 956	6 144 577	114,1	1,5	45,0	42,1	Yes
S18	Noise sensitive area: Demands defined in calculation setup. (18)	442 781	6 144 674	109,9	1,5	45,0	40,5	Yes
S19	Noise sensitive area: Demands defined in calculation setup. (19)	442 426	6 144 152	107,4	1,5	45,0	40,3	Yes
S20	Noise sensitive area: Demands defined in calculation setup. (20)	442 401	6 144 111	105,8	1,5	45,0	40,2	Yes
S21	Noise sensitive area: Demands defined in calculation setup. (21)	441 244	6 143 277	106,5	1,5	45,0	40,6	Yes
S22	Noise sensitive area: Demands defined in calculation setup. (22)	441 306	6 143 283	106,7	1,5	45,0	40,6	Yes
S23	Noise sensitive area: Demands defined in calculation setup. (23)	441 265	6 143 234	106,8	1,5	45,0	40,0	Yes
S24	Noise sensitive area: Demands defined in calculation setup. (24)	441 330	6 143 229	107,6	1,5	45,0	39,9	Yes
S25	Noise sensitive area: Demands defined in calculation setup. (25)	441 318	6 143 148	107,5	1,5	45,0	38,9	Yes
S26	Noise sensitive area: Demands defined in calculation setup. (26)	441 371	6 143 165	108,0	1,5	45,0	39,1	Yes
S27	Noise sensitive area: Demands defined in calculation setup. (27)	440 446	6 143 312	106,4	1,5	45,0	38,6	Yes
S28	Noise sensitive area: Demands defined in calculation setup. (28)	440 289	6 143 885	106,9	1,5	45,0	39,6	Yes
S29	Noise sensitive area: Demands defined in calculation setup. (29)	440 338	6 143 921	107,7	1,5	45,0	40,3	Yes
S30	Noise sensitive area: Demands defined in calculation setup. (30)	440 641	6 144 510	110,2	1,5	45,0	42,3	Yes
S31	Noise sensitive area: Demands defined in calculation setup. (31)	441 084	6 145 855	117,7	1,5	45,0	40,9	Yes
S32	Noise sensitive area: Demands defined in calculation setup. (32)	441 763	6 139 575	90,8	1,5	45,0	37,0	Yes
S33	Noise sensitive area: Demands defined in calculation setup. (33)	441 063	6 139 862	89,8	1,5	45,0	38,4	Yes
S34	Noise sensitive area: Demands defined in calculation setup. (34)	429 676	6 144 651	106,7	1,5	45,0	37,7	Yes
S35	Noise sensitive area: Demands defined in calculation setup. (35)	428 377	6 145 822	103,9	1,5	45,0	39,5	Yes
S36	Noise sensitive area: Demands defined in calculation setup. (37)	428 470	6 146 086	103,9	1,5	45,0	40,6	Yes
S37	Noise sensitive area: Demands defined in calculation setup. (38)	428 780	6 146 373	107,1	1,5	45,0	41,8	Yes
S38	Noise sensitive area: Demands defined in calculation setup. (39)	431 505	6 147 710	119,1	1,5	45,0	38,1	Yes
S39	Noise sensitive area: Demands defined in calculation setup. (40)	432 341	6 148 314	120,5	1,5	45,0	38,8	Yes

Distances (m)

WTG	S01	S02	S03	S04	S05	S06	S07	S08	S09	S10	S11	S12	S13	S14	S15	S16	S17	S18	S19	S20	S21	S22
RV01	4530	5064	5194	5356	5375	7084	7151	3297	2356	2353	3037	6894	7028	7020	7002	12206	13753	14688	14628	14621	15063	15014
RV02	4487	4904	4876	5031	5054	6970	7046	3824	2907	2904	3504	6836	7245	7233	7212	12308	13809	14707	14617	14608	14985	14938
RV03	3883	4387	4509	4672	4690	6420	6490	3136	2246	2244	2791	6247	6529	6518	6497	11635	13158	14076	14003	13995	14413	14365
RV04	3570	3955	3945	4103	4124	6026	6104	3522	2708	2708	3115	5905	6472	6457	6432	11436	12913	13795	13693	13684	14044	13997
RV05	3038	3250	3081	3233	3257	5334	5420	3935	3255	3256	3466	5278	6204	6183	6152	10942	12357	13194	13060	13049	13343	13298
RV06	2112	2513	2698	2866	2878	4568	4644	3219	2721	2725	2719	4439	5184	5164	5134	10005	11461	12332	12227	12218	12582	12535
RV07	2254	2335	2153	2310	2333	4413	4502	4042	3546	3549	3539	4389	5565	5539	5505	10107	11485	12298	12151	12138	12410	12366
RV08	1202	1452	1787	1954	1958	3519	3598	3646	3390	3396	3142	3423	4525	4498	4463	9084	10493	11335	11213	11202	11537	11491
RV09	1603	1422	1243	1409	1424	3472	3565	4340	4032	4037	3833	3492	4983	4953	4915	9256	10589	11376	11215	11201	11450	11406
RV10	696	707	1393	1540	1530	2767	2846	4000	3896	3902	3515	2686	4059	4028	3990	8395	9774	10602	10471	10459	10785	10739
RV11	1375	603	600	720	702	2429	2529	4853	4730	4736	4367	2530	4458	4423	4381	8312	9587	10342	10163	10148	10371	10328
RV12	1684	1008	1657	1640	1601	1093	1190	5284	5389	5397	4856	1236	3626	3587	3543	6991	8247	9005	8835	8821	9086	9041
RV13	3005	2357	2680	2595	2557	653	708	6501	6686	6693	6103	1231	3967	3927	3885	6118	7201	7864	7645	7627	7799	7757
RV14	3388	4257	4994	5158	5156	5832	5861	617	438	447	364	5452	4705	4707	4700	10052	11697	12725	12754	12754	13392	13337
RV15	2163	2995	4147	4262	4238	3661	3650	2583	3189	3199	2388	3148	1984	1980	1967	7299	8938	9000	10011	10013	10700	10645
RV16	1938	2297	3459	3516	3481	2068	2034	4210	4670	4678	3929	1508	1554	1518	1476	6072	7606	8563	8542	8540	9127	9073
RV17	2266	2215	3207	3215	3176	1146	1089	5132	5512	5520	4813	566	2185	2144	2101	5649	7062	7941	7862	7856	8338	8287

To be continued on next page...

DECIBEL - Main Result

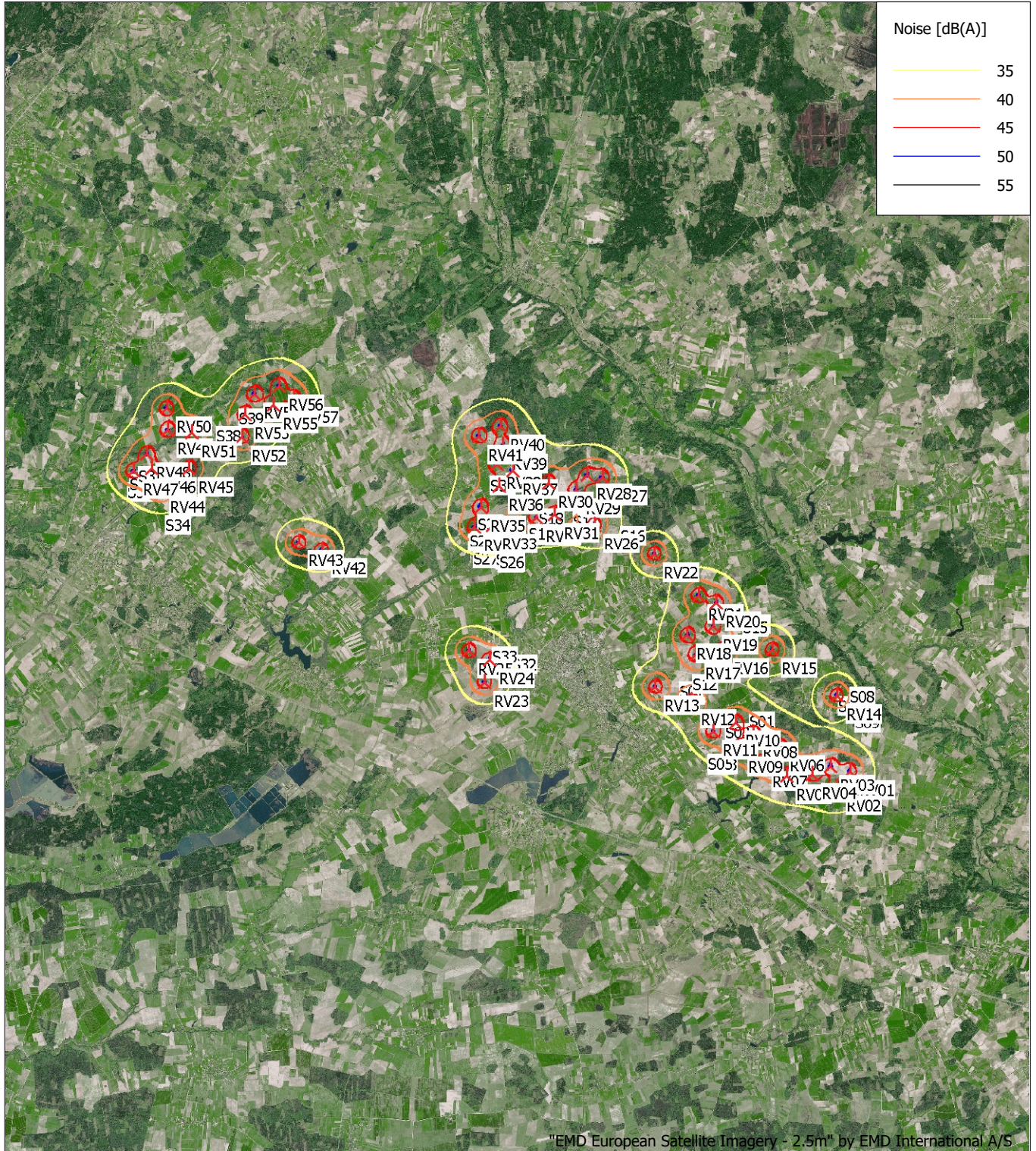
Calculation: Triuksmas

...continued from previous page

WTG	S23	S24	S25	S26	S27	S28	S29	S30	S31	S32	S33	S34	S35	S36	S37	S38	S39
RV32	1912	1856	1905	1850	2648	2706	2653	2390	2615	4638	4604	13314	14712	14659	14395	12039	11465
RV33	590	578	661	635	1109	1159	1114	1075	2077	4224	3939	11788	13218	13175	12924	10673	10163
RV34	692	737	791	814	592	546	509	762	2085	4288	3900	11170	12608	12568	12321	10108	9623
RV35	1252	1270	1348	1343	1297	948	878	400	1373	4936	4591	11352	12728	12672	12405	10060	9510
RV36	1995	1986	2069	2043	2253	1920	1849	1258	918	5595	5344	12030	13340	13267	12980	10499	9875
RV37	2636	2619	2700	2667	2960	2630	2560	1953	1117	6131	5935	12547	13810	13725	13426	10860	10189
RV38	2733	2730	2812	2790	2884	2454	2386	1734	551	6359	6094	12011	13248	13158	12855	10264	9585
RV39	3409	3403	3486	3461	3571	3128	3061	2405	1070	7006	6763	12327	13503	13399	13081	10403	9674
RV40	4073	4070	4153	4130	4180	3698	3635	2980	1576	7690	7435	12368	13472	13355	13023	10263	9488
RV41	3714	3724	3805	3793	3671	3134	3078	2447	1078	7395	7065	11550	12678	12566	12240	9521	8774
RV42	5802	5863	5854	5908	4978	4889	4942	5372	6266	7188	6437	5989	7598	7623	7464	6118	6123
RV43	6604	6665	6659	6712	5775	5649	5699	6090	6890	8024	7272	5142	6751	6778	6625	5412	5508
RV44	11595	11657	11663	11714	10768	10523	10562	10805	11227	13208	12454	650	1554	1593	1526	2945	3912
RV45	10751	10812	10825	10873	9933	9642	9677	9870	10198	12631	11883	1764	2483	2391	2118	1864	2762
RV46	12024	12085	12096	12144	11202	10926	10962	11168	11509	13780	13027	1319	1178	1084	869	2623	3630
RV47	12641	12703	12712	12761	11817	11550	11588	11803	12157	14326	13572	1464	525	470	494	3179	4188
RV48	12314	12375	12388	12436	11497	11199	11234	11413	11695	14171	13420	1846	1193	983	605	2461	3467
RV49	11846	11906	11925	11971	11046	10702	10730	10853	11020	13956	13215	2687	2293	2052	1635	1431	2409
RV50	12162	12221	12244	12288	11377	11002	11026	11106	11179	14421	13687	3440	2826	2555	2137	1442	2235
RV51	11010	11070	11091	11135	10215	9861	9888	10000	10157	13196	12459	2873	2956	2754	2361	721	1727
RV52	9339	9399	9423	9466	8558	8178	8202	8287	8414	11708	10987	3862	4511	4356	3998	1390	1332
RV53	9588	9645	9675	9715	8833	8413	8430	8455	8451	12141	11434	4470	4884	4693	4304	1322	702
RV54	9664	9720	9755	9792	8941	8485	8494	8459	8323	12399	11710	5220	5507	5296	4893	1843	860
RV55	8887	8943	8979	9015	8166	7708	7717	7682	7566	11649	10966	5419	5927	5740	5353	2356	1510
RV56	9105	9158	9199	9232	8417	7927	7932	7842	7601	12009	11343	6011	6393	6189	5789	2741	1766
RV57	8415	8468	8509	8542	7726	7237	7242	7157	6946	11329	10667	6122	6683	6498	6113	3113	2228

DECIBEL - Map 10,0 m/s

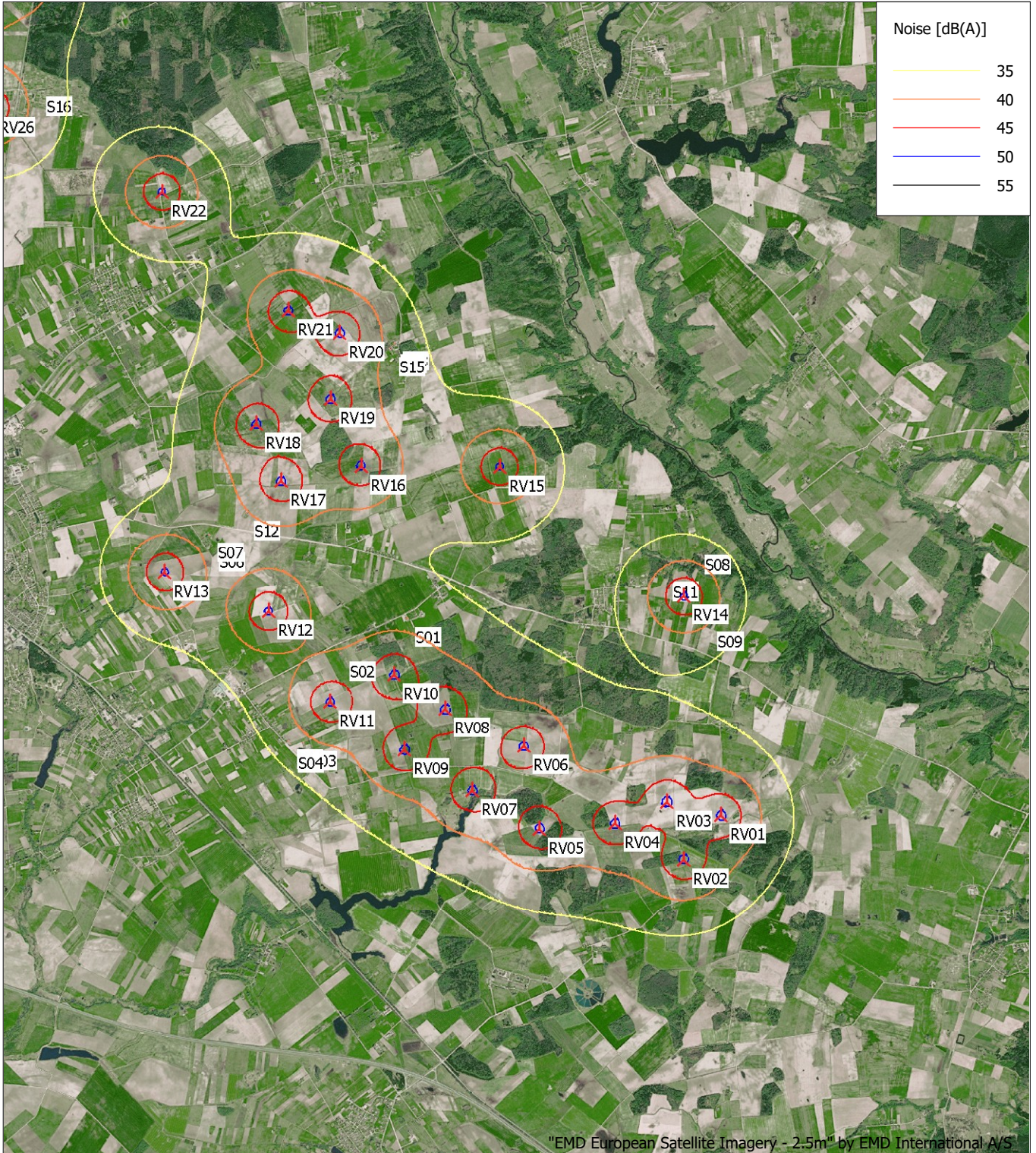
Calculation: Triuksmas



Map: windPRO European Satellite Imagery - 2.5m , Print scale 1:200 000, Map center Lithuanian TM LKS94-LKS94 (LT) East: 441 685 North: 6 141 462
 ▲ New WTG ■ Noise sensitive area
 Noise calculation model: ISO 9613-2 General. Wind speed: 10,0 m/s
 Height above sea level from active line object

DECIBEL - Map 10,0 m/s

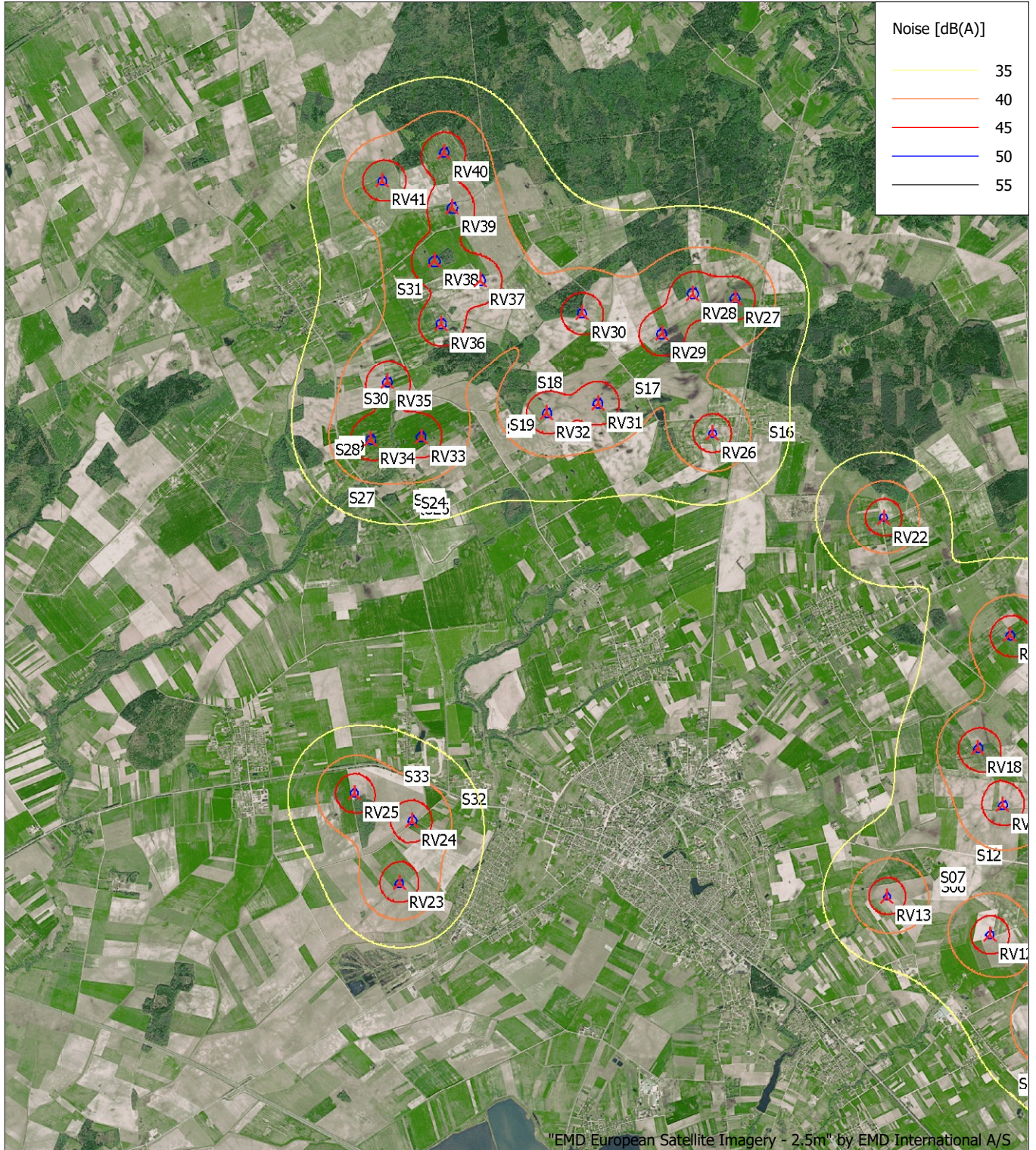
Calculation: Triuksmas



Map: windPRO European Satellite Imagery - 2.5m , Print scale 1:70 000, Map center Lithuanian TM LKS94-LKS94 (LT) East: 451 146 North: 6 137 782
 ▲ New WTG ■ Noise sensitive area
 Noise calculation model: ISO 9613-2 General. Wind speed: 10,0 m/s
 Height above sea level from active line object

DECIBEL - Map 10,0 m/s

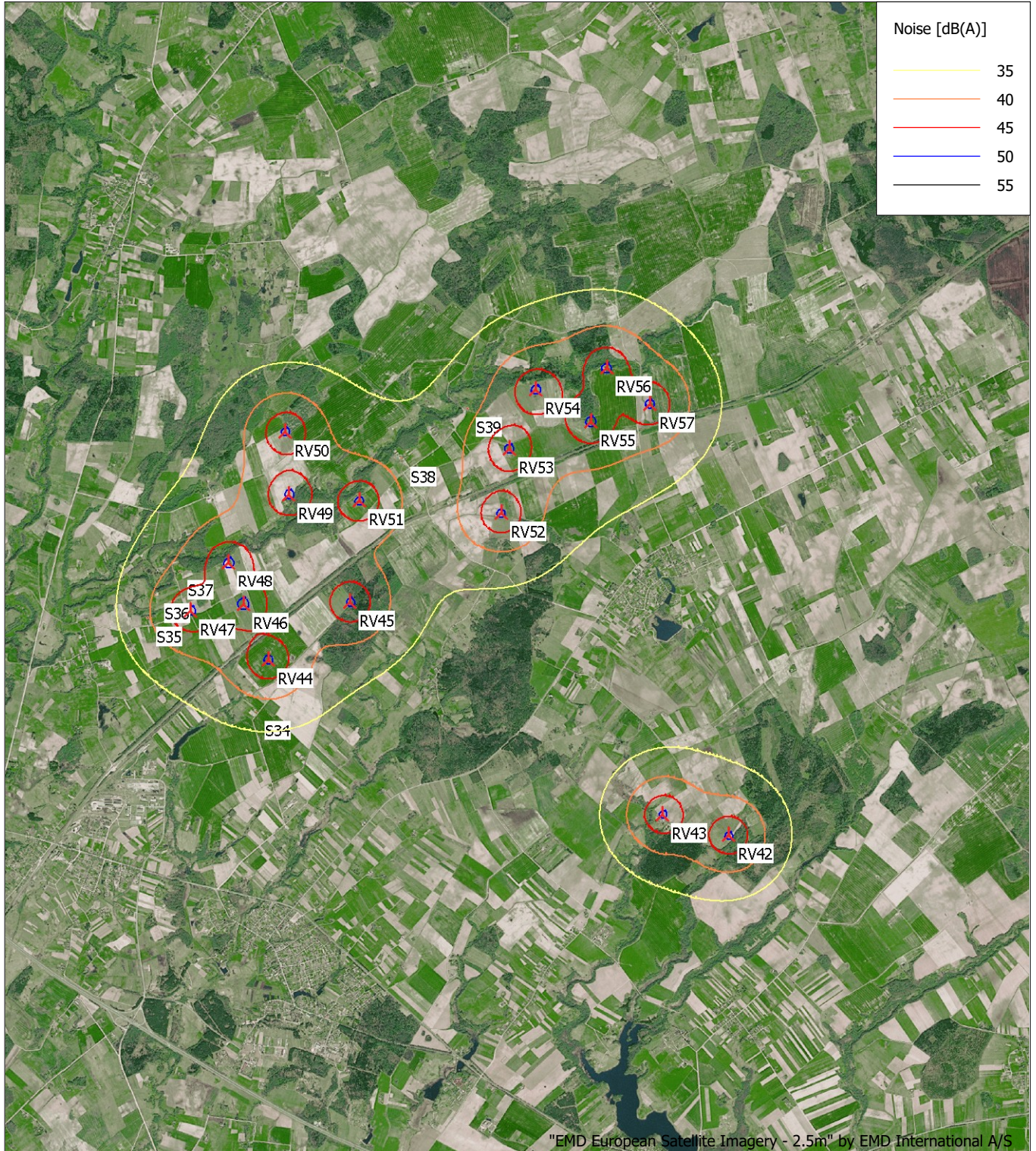
Calculation: Triuksmas



Map: windPRO European Satellite Imagery - 2.5m, Print scale 1:70 000, Map center Lithuanian TM LKS94-LKS94 (LT) East: 442 363 North: 6 141 886
 ▲ New WTG ■ Noise sensitive area
 Noise calculation model: ISO 9613-2 General. Wind speed: 10,0 m/s
 Height above sea level from active line object

DECIBEL - Map 10,0 m/s

Calculation: Triuksmas



Map: windPRO European Satellite Imagery - 2.5m , Print scale 1:70 000, Map center Lithuanian TM LKS94-LKS94 (LT) East: 432 696 North: 6 146 078
 ▲ New WTG ■ Noise sensitive area

Noise calculation model: ISO 9613-2 General. Wind speed: 10,0 m/s
 Height above sea level from active line object

"3" alternatyva

Project:

UAB Raseiniu vejas 57 VE

Licensed user:

UAB ARCHSTUDIJA
Konstitucijos pr. 9-41
LT-09308 Vilnius

Calculated:

2024-02-26 16:58/3.6.355

DECIBEL - Main Result

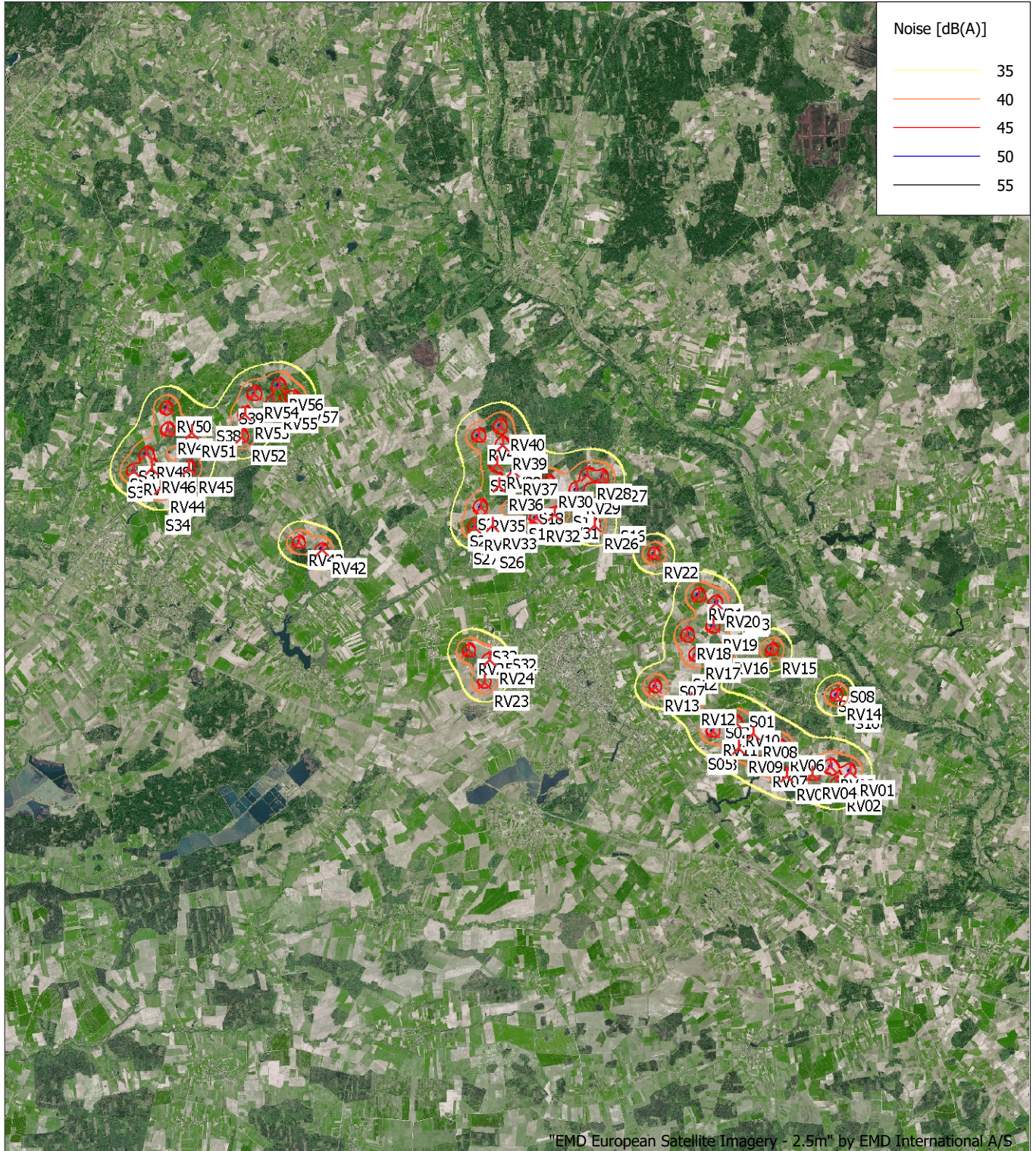
Calculation: Triuksmas

...continued from previous page

WTG	S23	S24	S25	S26	S27	S28	S29	S30	S31	S32	S33	S34	S35	S36	S37	S38	S39
RV30	2985	2942	3008	2958	3582	3444	3379	2901	2422	5933	5900	13764	15066	14988	14697	12165	11502
RV31	2532	2474	2518	2462	3284	3342	3289	2997	3042	4942	4992	13939	15326	15269	15001	12609	12014
RV32	1912	1856	1905	1850	2648	2706	2653	2390	2615	4638	4604	13314	14712	14659	14395	12039	11465
RV33	590	578	661	635	1109	1159	1114	1075	2077	4224	3939	11788	13218	13175	12924	10673	10163
RV34	692	737	791	814	592	546	509	762	2085	4288	3900	11170	12608	12568	12321	10108	9623
RV35	1252	1270	1348	1343	1297	948	878	400	1373	4936	4591	11352	12728	12672	12405	10060	9510
RV36	1995	1986	2069	2043	2253	1920	1849	1258	918	5595	5344	12030	13340	13267	12980	10499	9875
RV37	2636	2619	2700	2667	2960	2630	2560	1953	1117	6131	5935	12547	13810	13725	13426	10860	10189
RV38	2733	2730	2812	2790	2884	2454	2386	1734	551	6359	6094	12011	13248	13158	12855	10264	9585
RV39	3409	3403	3486	3461	3571	3128	3061	2405	1070	7006	6763	12327	13503	13399	13081	10403	9674
RV40	4073	4070	4153	4130	4180	3698	3635	2980	1576	7690	7435	12368	13472	13355	13023	10263	9488
RV41	3714	3724	3805	3793	3671	3134	3078	2447	1078	7395	7065	11550	12678	12566	12240	9521	8774
RV42	5802	5863	5854	5908	4978	4889	4942	5372	6266	7188	6437	5989	7598	7623	7464	6118	6123
RV43	6604	6665	6659	6712	5775	5649	5699	6090	6890	8024	7272	5142	6751	6778	6625	5412	5508
RV44	11595	11657	11663	11714	10768	10523	10562	10805	11227	13208	12454	650	1554	1593	1526	2945	3912
RV45	10751	10812	10825	10873	9933	9642	9677	9870	10198	12631	11883	1764	2483	2391	2118	1864	2762
RV46	12024	12085	12096	12144	11202	10926	10962	11168	11509	13780	13027	1319	1178	1084	869	2623	3630
RV47	12641	12703	12712	12761	11817	11550	11588	11803	12157	14326	13572	1464	525	470	494	3179	4188
RV48	12314	12375	12388	12436	11497	11199	11234	11413	11695	14171	13420	1846	1193	983	605	2461	3467
RV49	11846	11906	11925	11971	11046	10702	10730	10853	11020	13956	13215	2687	2293	2052	1635	1431	2409
RV50	12162	12221	12244	12288	11377	11002	11026	11106	11179	14421	13687	3440	2826	2555	2137	1442	2235
RV51	11010	11070	11091	11135	10215	9861	9888	10000	10157	13196	12459	2873	2956	2754	2361	721	1727
RV52	9339	9399	9423	9466	8558	8178	8202	8287	8414	11708	10987	3862	4511	4356	3998	1390	1332
RV53	9588	9645	9675	9715	8833	8413	8430	8455	8451	12141	11434	4470	4884	4693	4304	1322	702
RV54	9664	9720	9755	9792	8941	8485	8494	8459	8323	12399	11710	5220	5507	5296	4893	1843	860
RV55	8887	8943	8979	9015	8166	7708	7717	7682	7566	11649	10966	5419	5927	5740	5353	2356	1510
RV56	9105	9158	9199	9232	8417	7927	7932	7842	7601	12009	11343	6011	6393	6189	5789	2741	1766
RV57	8415	8468	8509	8542	7726	7237	7242	7157	6946	11329	10667	6122	6683	6498	6113	3113	2228

DECIBEL - Map 10,0 m/s

Calculation: Triuksmas



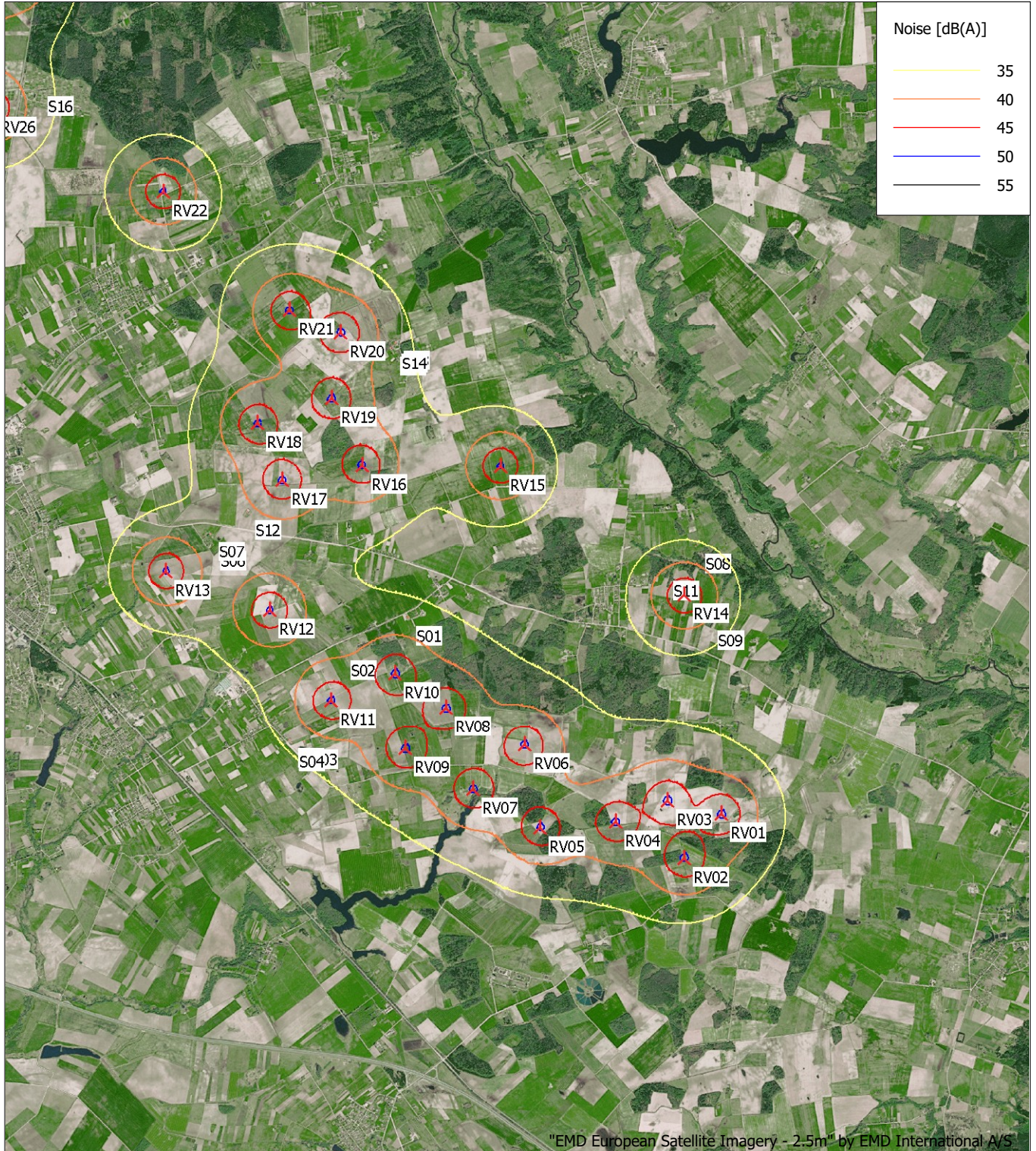
"EMD European Satellite Imagery - 2.5m" by EMD International A/S



Map: windPRO European Satellite Imagery - 2.5m , Print scale 1:200 000, Map center Lithuanian TM LKS94-LKS94 (LT) East: 441 685 North: 6 141 462
 ▲ New WTG ■ Noise sensitive area
 Noise calculation model: ISO 9613-2 General. Wind speed: 10,0 m/s
 Height above sea level from active line object

DECIBEL - Map 10,0 m/s

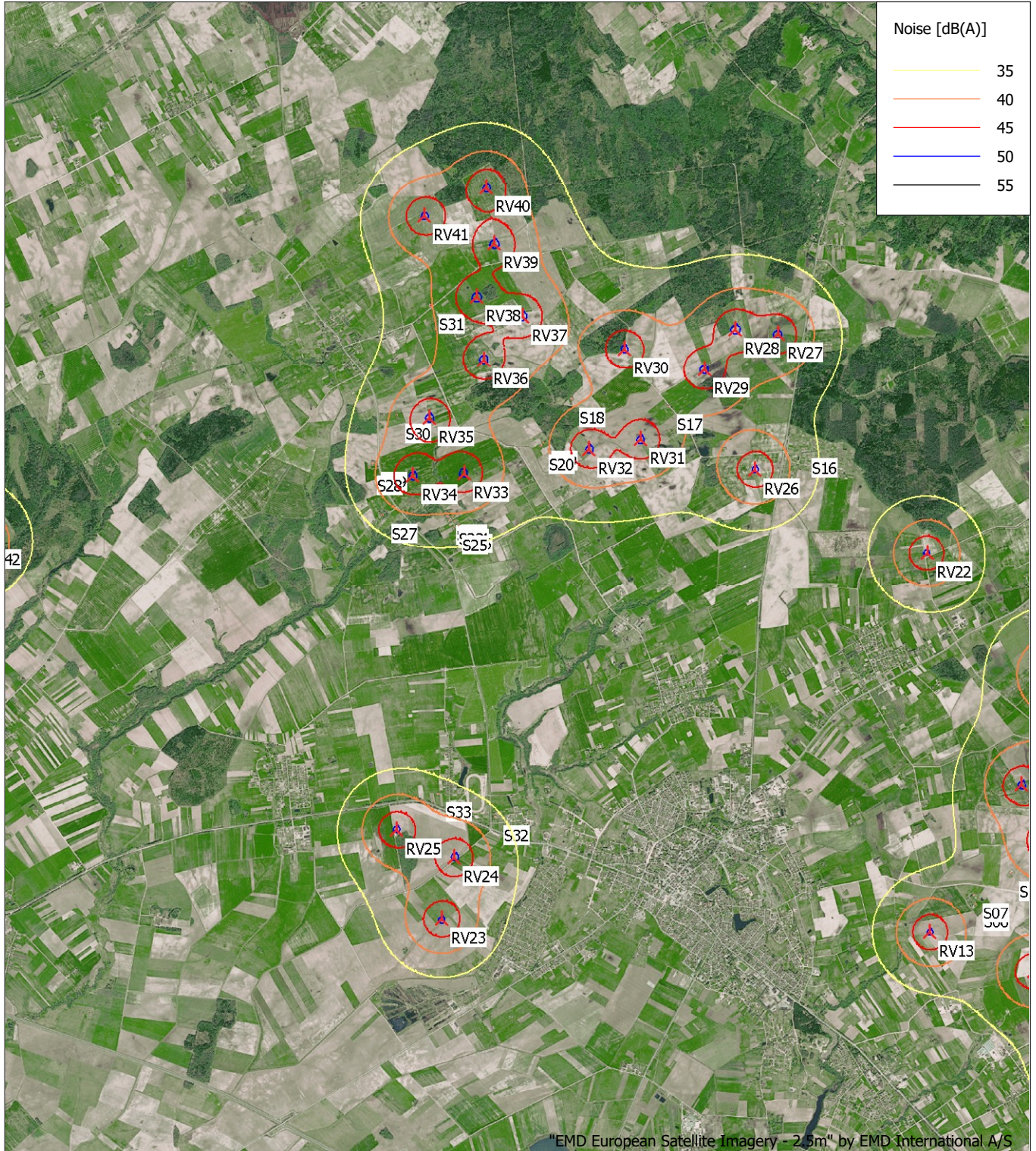
Calculation: Triuksmas



Map: windPRO European Satellite Imagery - 2.5m , Print scale 1:70 000, Map center Lithuanian TM LKS94-LKS94 (LT) East: 451 146 North: 6 137 782
 ▲ New WTG ■ Noise sensitive area
 Noise calculation model: ISO 9613-2 General. Wind speed: 10,0 m/s
 Height above sea level from active line object

DECIBEL - Map 10,0 m/s

Calculation: Triuksmas

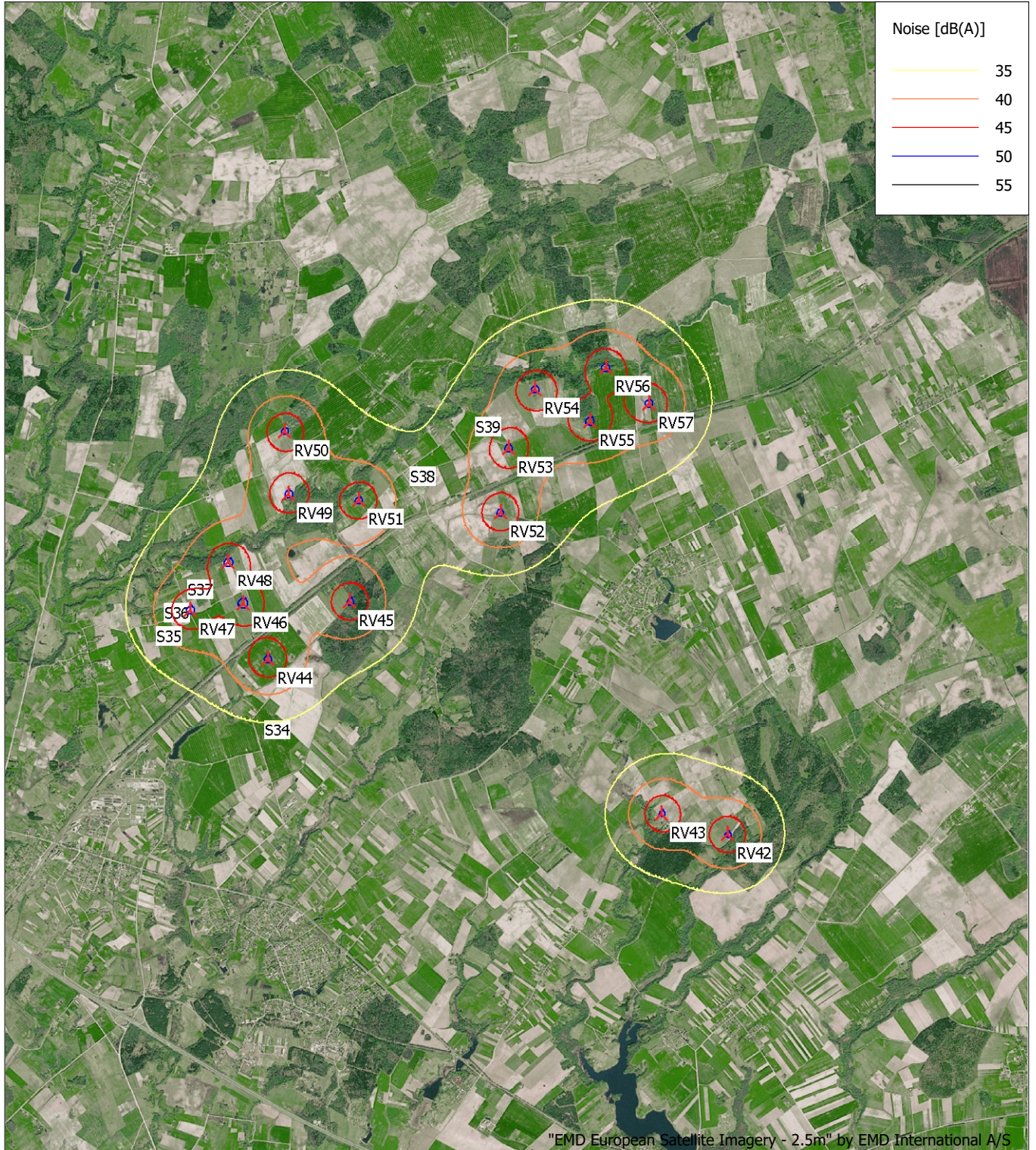


Map: windPRO European Satellite Imagery - 2.5m , Print scale 1:70 000, Map center Lithuanian TM LKS94-LKS94 (LT) East: 441 855 North: 6 142 329
 ▲ New WTG ■ Noise sensitive area

Noise calculation model: ISO 9613-2 General. Wind speed: 10,0 m/s
 Height above sea level from active line object

DECIBEL - Map 10,0 m/s

Calculation: Triuksmas



Map: windPRO European Satellite Imagery - 2.5m , Print scale 1:70 000, Map center Lithuanian TM LKS94-LKS94 (LT) East: 432 696 North: 6 146 078
▲ New WTG ■ Noise sensitive area
Noise calculation model: ISO 9613-2 General. Wind speed: 10,0 m/s
Height above sea level from active line object

"H" alternatyva

DECIBEL - Main Result

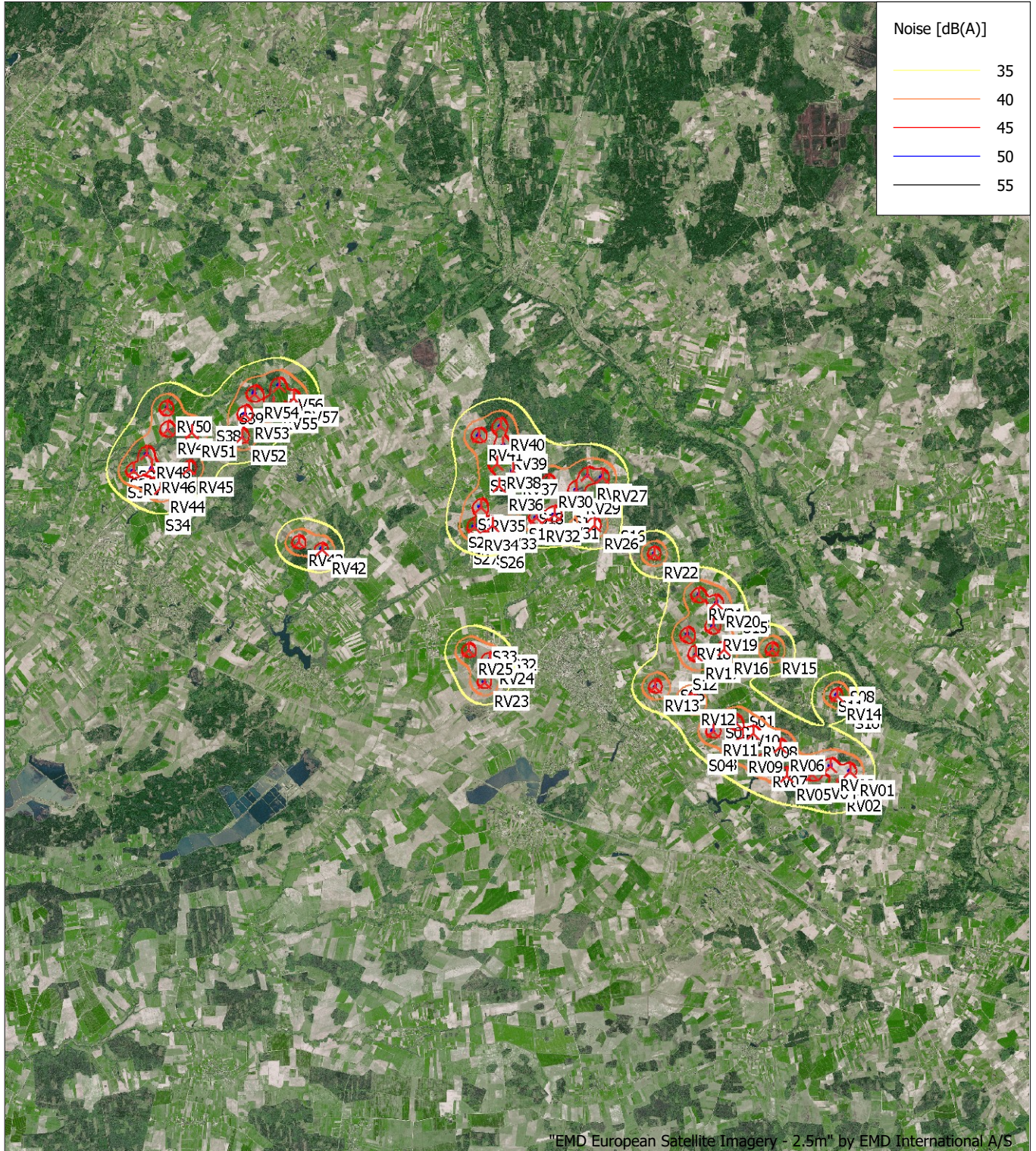
Calculation: Triuksmas

...continued from previous page

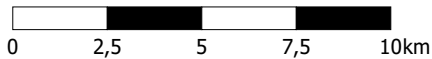
WTG	S23	S24	S25	S26	S27	S28	S29	S30	S31	S32	S33	S34	S35	S36	S37	S38	S39
RV25	3844	3849	3774	3802	3849	4445	4489	5067	6420	1209	657	12055	13743	13797	13670	12261	12096
RV26	3788	3725	3752	3696	4590	4730	4681	4436	4443	5306	5552	15354	16759	16706	16442	14060	13460
RV27	4609	4555	4606	4551	5311	5259	5197	4764	4249	6838	6993	15646	16937	16855	16559	13981	13286
RV28	4199	4148	4203	4149	4872	4790	4726	4273	3727	6646	6749	15132	16417	16335	16038	13459	12766
RV29	3612	3559	3611	3557	4311	4270	4209	3800	3425	6035	6127	14723	16045	15971	15684	13167	12506
RV30	2985	2942	3008	2958	3582	3444	3379	2901	2422	5933	5900	13764	15066	14988	14697	12165	11502
RV31	2532	2474	2518	2462	3284	3342	3289	2997	3042	4942	4992	13939	15326	15269	15001	12609	12014
RV32	1912	1856	1905	1850	2648	2706	2653	2390	2615	4638	4604	13314	14712	14659	14395	12039	11465
RV33	590	578	661	635	1109	1159	1114	1075	2077	4224	3939	11788	13218	13175	12924	10673	10163
RV34	692	737	791	814	592	546	509	762	2085	4288	3900	11170	12608	12568	12321	10108	9623
RV35	1252	1270	1348	1343	1297	948	878	400	1373	4936	4591	11352	12728	12672	12405	10060	9510
RV36	1995	1986	2069	2043	2253	1920	1849	1258	918	5595	5344	12030	13340	13267	12980	10499	9875
RV37	2636	2619	2700	2667	2960	2630	2560	1953	1117	6131	5935	12547	13810	13725	13426	10860	10189
RV38	2733	2730	2812	2790	2884	2454	2386	1734	551	6359	6094	12011	13248	13158	12855	10264	9585
RV39	3409	3403	3486	3461	3571	3128	3061	2405	1070	7006	6763	12327	13503	13399	13081	10403	9674
RV40	4073	4070	4153	4130	4180	3698	3635	2980	1576	7690	7435	12368	13472	13355	13023	10263	9488
RV41	3714	3724	3805	3793	3671	3134	3078	2447	1078	7395	7065	11550	12678	12566	12240	9521	8774
RV42	5802	5863	5854	5908	4978	4889	4942	5372	6266	7188	6437	5989	7598	7623	7464	6118	6123
RV43	6604	6665	6659	6712	5775	5649	5699	6090	6890	8024	7272	5142	6751	6778	6625	5412	5508
RV44	11595	11657	11663	11714	10768	10523	10562	10805	11227	13208	12454	650	1554	1593	1526	2945	3912
RV45	10751	10812	10825	10873	9933	9642	9677	9870	10198	12631	11883	1764	2483	2391	2118	1864	2762
RV46	12024	12085	12096	12144	11202	10926	10962	11168	11509	13780	13027	1319	1178	1084	869	2623	3630
RV47	12641	12703	12712	12761	11817	11550	11588	11803	12157	14326	13572	1464	525	470	494	3179	4188
RV48	12314	12375	12388	12436	11497	11199	11234	11413	11695	14171	13420	1846	1193	983	605	2461	3467
RV49	11846	11906	11925	11971	11046	10702	10730	10853	11020	13956	13215	2687	2293	2052	1635	1431	2409
RV50	12162	12221	12244	12288	11377	11002	11026	11106	11179	14421	13687	3440	2826	2555	2137	1442	2235
RV51	11010	11070	11091	11135	10215	9861	9888	10000	10157	13196	12459	2873	2956	2754	2361	721	1727
RV52	9339	9399	9423	9466	8558	8178	8202	8287	8414	11708	10987	3862	4511	4356	3998	1390	1332
RV53	9588	9645	9675	9715	8833	8413	8430	8455	8451	12141	11434	4470	4884	4693	4304	1322	702
RV54	9664	9720	9755	9792	8941	8485	8494	8459	8323	12399	11710	5220	5507	5296	4893	1843	860
RV55	8887	8943	8979	9015	8166	7708	7717	7682	7566	11649	10966	5419	5927	5740	5353	2356	1510
RV56	9105	9158	9199	9232	8417	7927	7932	7842	7601	12009	11343	6011	6393	6189	5789	2741	1766
RV57	8415	8468	8509	8542	7726	7237	7242	7157	6946	11329	10667	6122	6683	6498	6113	3113	2228

DECIBEL - Map 10,0 m/s

Calculation: Triuksmas



"EMD European Satellite Imagery - 2.5m" by EMD International A/S

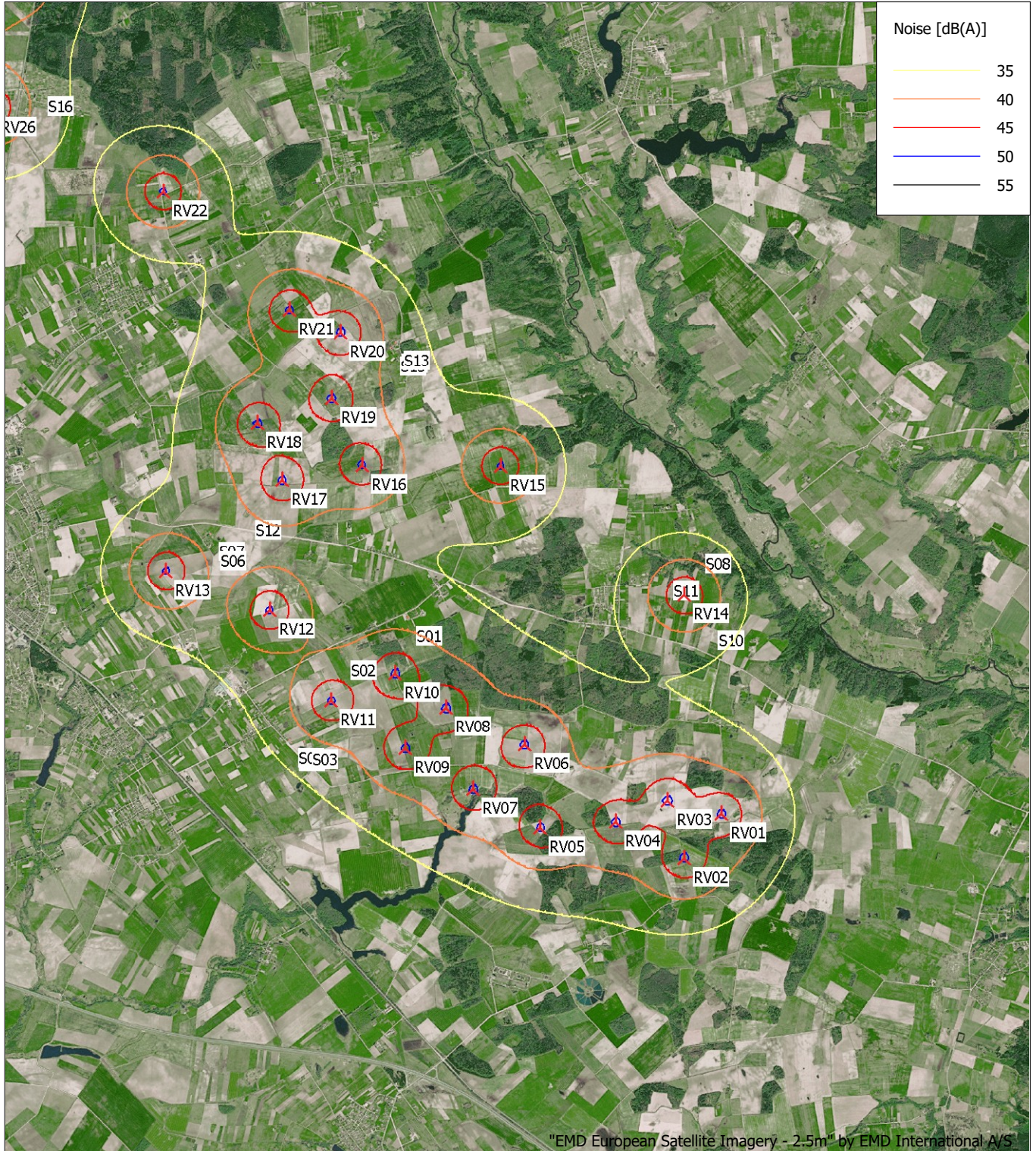


Map: windPRO European Satellite Imagery - 2.5m , Print scale 1:200 000, Map center Lithuanian TM LKS94-LKS94 (LT) East: 441 685 North: 6 141 462
 ▲ New WTG ■ Noise sensitive area

Noise calculation model: ISO 9613-2 General. Wind speed: 10,0 m/s
 Height above sea level from active line object

DECIBEL - Map 10,0 m/s

Calculation: Triuksmas

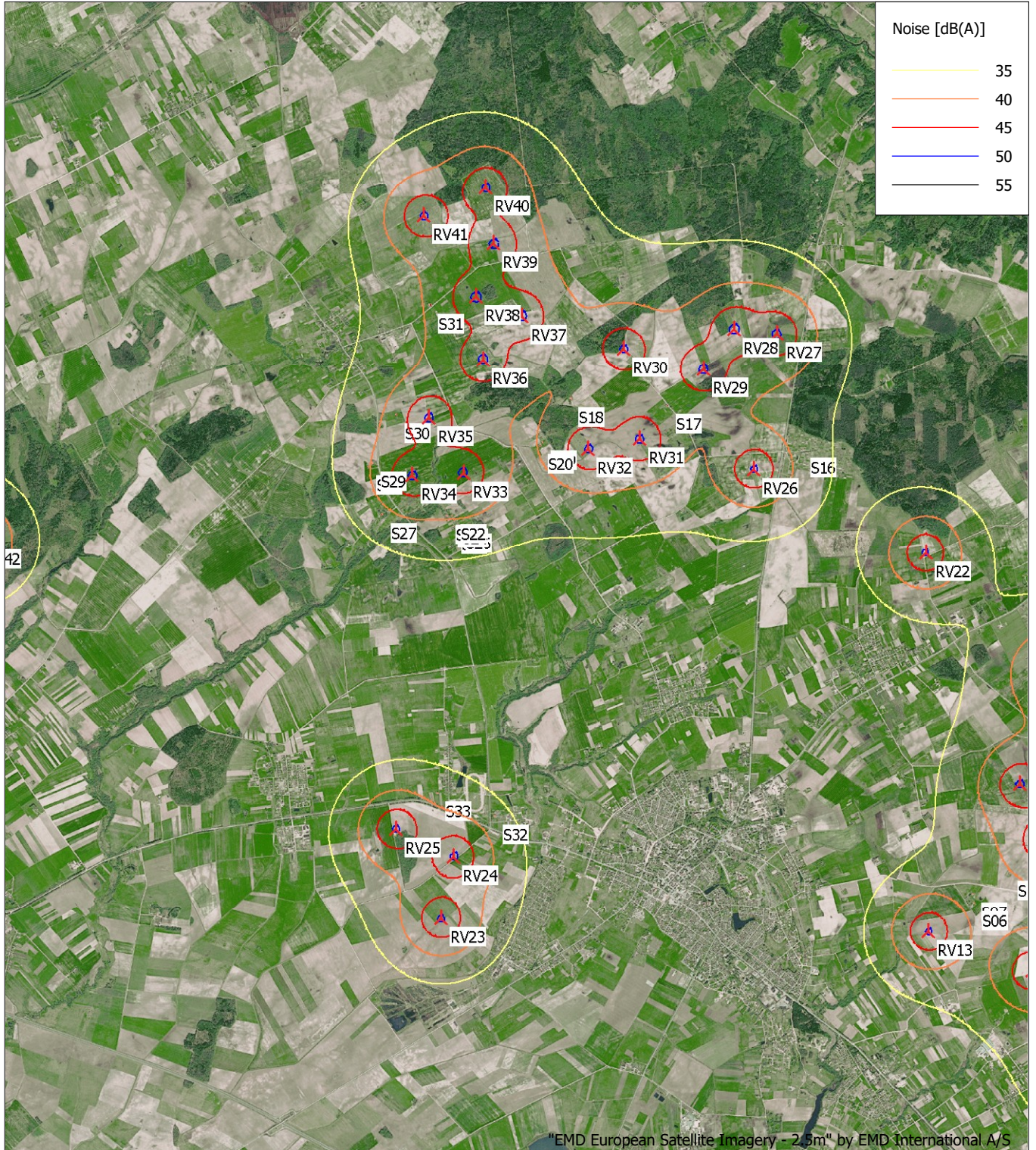


Map: windPRO European Satellite Imagery - 2.5m , Print scale 1:70 000, Map center Lithuanian TM LKS94-LKS94 (LT) East: 451 146 North: 6 137 782
 ▲ New WTG ■ Noise sensitive area

Noise calculation model: ISO 9613-2 General. Wind speed: 10,0 m/s
 Height above sea level from active line object

DECIBEL - Map 10,0 m/s

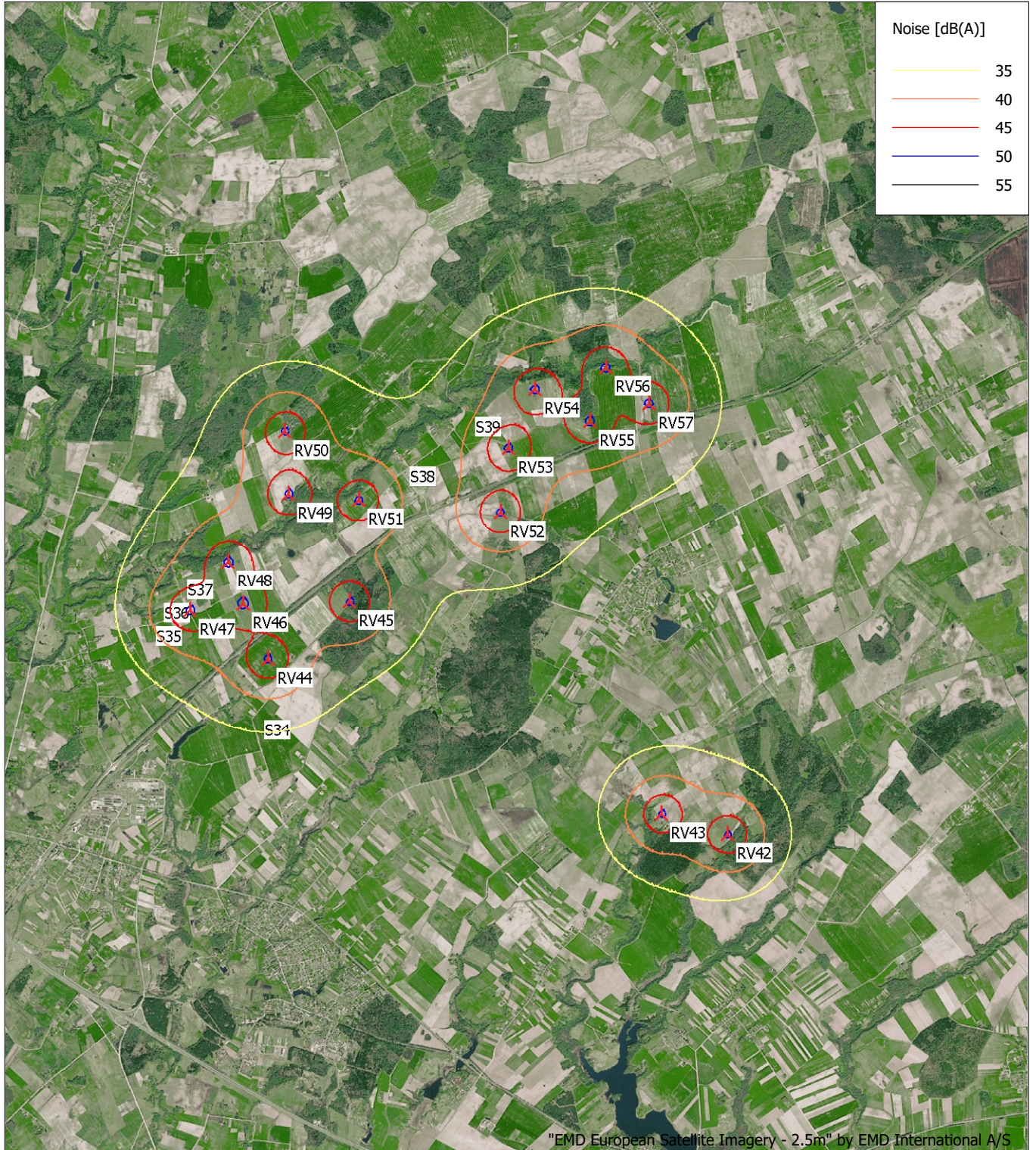
Calculation: Triuksmas



Map: windPRO European Satellite Imagery - 2.5m , Print scale 1:70 000, Map center Lithuanian TM LKS94-LKS94 (LT) East: 441 855 North: 6 142 329
 ▲ New WTG ■ Noise sensitive area
 Noise calculation model: ISO 9613-2 General. Wind speed: 10,0 m/s
 Height above sea level from active line object

DECIBEL - Map 10,0 m/s

Calculation: Triuksmas



Map: windPRO European Satellite Imagery - 2.5m , Print scale 1:70 000, Map center Lithuanian TM LKS94-LKS94 (LT) East: 432 696 North: 6 146 078
▲ New WTG ■ Noise sensitive area
Noise calculation model: ISO 9613-2 General. Wind speed: 10,0 m/s
Height above sea level from active line object